

Features:

- Sizes 8" thru 32" square (Even Sizes)
- Heavy duty, high duty cycle design
- Flush blade seal; Low leakage
- Pneumatic cylinder actuated & externally mounted bearings
- Visual flag for blade position indication
- Removable access panel for maintenance
- 15" W.G. (-3.74 k pa)
- Design Rating
- Mountable in any position

Power Requirements:

- 24V Standard
- 70 PSI compressed air supply

Industries:

Textiles, paper, tobacco, wood, plastics, agricultural & rubber dust applications.

Available Services:

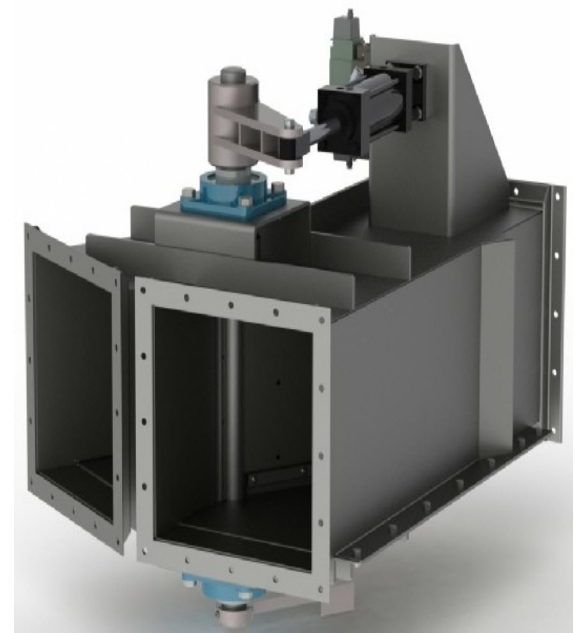
- System Integration
- Industrial Ventilation
- Material Handling
- Power & Controls
- Manufacturing

Product Description:

ATMOS360 Diverters are designed to handle applications where there is dust or fiber loading in the air stream. The pneumatic actuator provides full stroke blade positioning, diverting air from one side to the other. Typical applications include diverting air from on-line hoods to an air bleed to maintain conveying velocity in the duct network in the event of a sheet break or thread-up operation.

Heavy duty galvanized steel construction with air cylinder actuated gate. Polyurethane seals with a 40 durometer rating. Mountable in either horizontal or vertical orientation. Standard unit is provided with a 24V solenoid and adjustable air cylinder flow control valves.

Optional inlet transitions and air bleed screens can be provided upon request.



AIR SYSTEM DIVERTER VALVES

**64 CIRCLE FREEWAY DR
CINCINNATI, OH 45246**

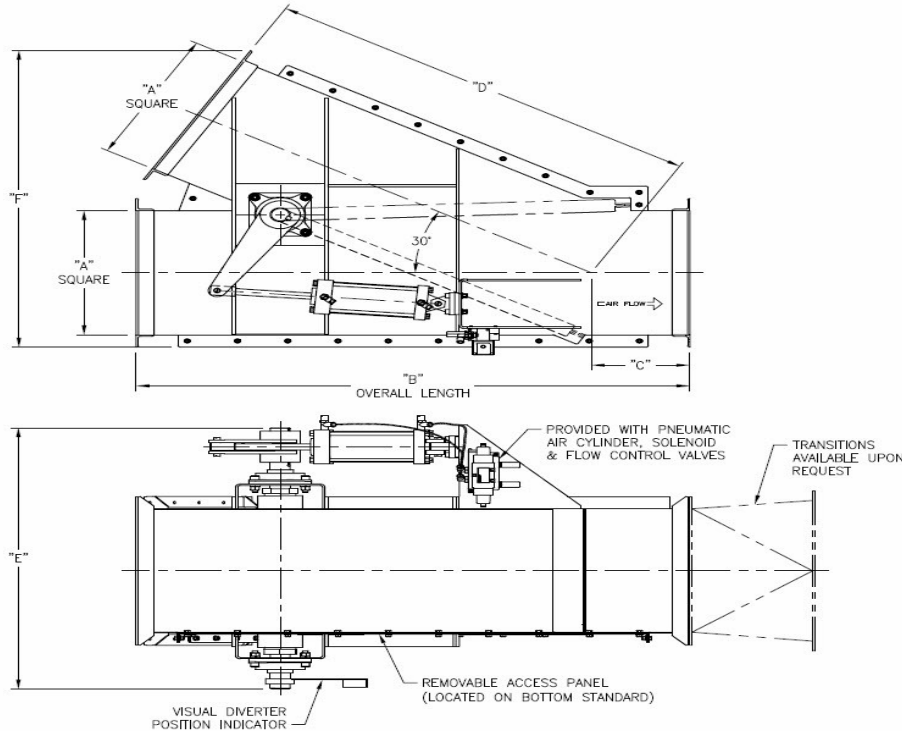
www.atmos360.com

Phone: 513-330-5442

E-mail: info@atmos360.com

Automatic Air Diverter Valve Models

MODEL	A	B	C	D	E	F	WEIGHT
510060	8"	28-1/2"	6-1/4"	22-1/4"	24-7/8"	22-3/4"	150 LBS
510061	10"	34"	6-1/2"	27-1/2"	27-7/8"	26-3/8"	215 LBS
510062	12"	40"	6-1/2"	34-1/8"	29-7/8"	31"	280 LBS
510001	14"	42"	7"	34-7/8"	34-3/8"	33-7/8"	395 LBS
510063	16"	45-3/4"	7"	38-5/8"	38-1/2"	37-3/4"	505 LBS
510064	18"	58-1/2"	7-5/8"	50-5/8"	38-1/2"	37-3/4"	600 LBS
510065	20"	62"	10-12"	51-1/2"	39-5/8"	48-1/4"	710 LBS
510066	22"	65-3/4"	11"	55"	44"	48-7/8"	790 LBS
510067	24"	70-1/2"	11"	60"	46"	56"	870 LBS
510068	26"	72-1/2"	11"	62-3/4"	49"	60"	1,100 LBS
510069	28"	78-1/4"	11"	68-1/4"	51"	64-5/8"	1,200 LBS
510070	30"	84"	11-1/4"	72-1/2"	54-1/2"	69"	1,300 LBS
510071	32"	91-5/8"	14-3/4"	77"	55"	72-1/2"	1,408 LBS



Replacement Parts

PART NUMBER	DESCRIPTION
510983	8 x 8 DIVERTER SEAL KIT
510984	10 x 10 DIVERTER SEAL KIT
510985	12 x 12 DIVERTER SEAL KIT
510986	14 x 14 DIVERTER SEAL KIT
510987	16 x 16 DIVERTER SEAL KIT
510988	18 x 18 DIVERTER SEAL KIT
510989	20 x 20 DIVERTER SEAL KIT
510990	22 x 22 DIVERTER SEAL KIT
510991	24 x 24 DIVERTER SEAL KIT
510992	26 x 26 DIVERTER SEAL KIT
510993	28 x 28 DIVERTER SEAL KIT
510994	30 x 30 DIVERTER SEAL KIT

ATMOS360, Inc
 64 Circle Freeway Dr
 Cincinnati, OH 45246
 Phone: (513) 330-5442